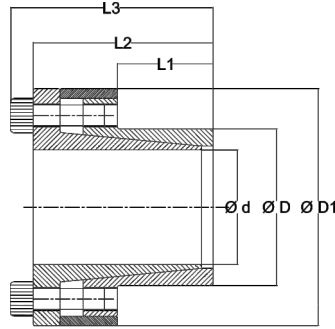


C-1013

CANTO LOCK

Locking Assembly/Rigid Coupling/ Shrink Disk



CANTOLOCK C1013 locking assembly with single taper design consist of two tapered ring and a space.

Features

- Medium Capacity
- Self centering and self Locking
- Suitable for thin walled Hub
- Tolerances Shaft: h11 Hub-H11

Installation

Carefully clean contact surfaces of shaft and hub. Then, lightly oil both surfaces with standard mineral oil. Position the CANTOLOCK on the shaft and into the hub machined bore. Align them as required by the application. Gradually and uniformly tighten the locking screws to the tightening torque.

You must tighten the screws in diametrically sequence in stages:

- hand the screws until the surfaces are in contact

Removal

Gradually loosen all locking screws. Remove and transfer the screws into the releasing tapped holes and tighten them until the CANTOLOCK is released.

Dimensions [mm]			Performances		Pressure [N/mm ²]	
d x D	L1	L3	MT [Nm]	Fax [kN]	PS	PH
6 x 14	10	18,5	25	12	M 3	2
7 x 15	12	22	27	26	M 4	4,9
8 x 15	12	22	27	30	M 4	4,9
9 x 16	14	23	28	44	M 4	4,9
10 x 16	14	23	28	49	M 4	4,9
11 x 18	14	23	32	54	M 4	4,9
12 x 18	14	23	32	59	M 4	4,9
13 x 23	14	23	38	64	M 4	4,9
14 x 23	14	23	38	69	M 4	4,9
15 x 24	16	29	45	128	M 6	17
16 x 24	16	29	45	136	M 6	17
17 x 26	18	31	47	193	M 6	17
18 x 26	18	31	47	205	M 6	17
19 x 27	18	31	49	216	M 6	17
20 x 28	18	31	50	227	M 6	17
22 x 32	25	38	54	250	M 6	17
24 x 34	25	38	56	273	M 6	17
25 x 34	25	38	56	284	M 6	17
28 x 39	25	38	61	478	M 6	17
30 x 41	25	38	62	512	M 6	17
32 x 43	25	38	65	546	M 6	17
35 x 47	32	45	69	796	M 6	17
38 x 50	32	45	72	864	M 6	17
40 x 53	32	45	75	910	M 6	17
42 x 55	32	45	78	955	M 6	17
45 x 59	45	62	86	1.891	M 8	41
48 x 62	45	62	87	2.017	M 8	41
50 x 65	45	62	92	2.101	M 8	41
55 x 71	55	72	98	2.600	M 8	41
60 x 77	55	72	104	2.836	M 8	41
65 x 84	55	72	111	3.073	M 8	41
70 x 90	65	86	119	5.254	M 10	83
75 x 95	65	86	126	5.630	M 10	83
80 x 100	65	86	131	8.006	M 10	83
85 x 106	65	86	137	8.507	M 10	83
90 x 112	65	86	144	9.007	M 10	83
95 x 120	65	86	149	11.092	M 10	83
100 x 125	65	86	154	15.012	M 10	83
110 x 140	90	114	180	16.029	M 12	145
120 x 155	90	114	198	17.486	M 12	145
130 x 165	90	114	208	25.257	M 12	145